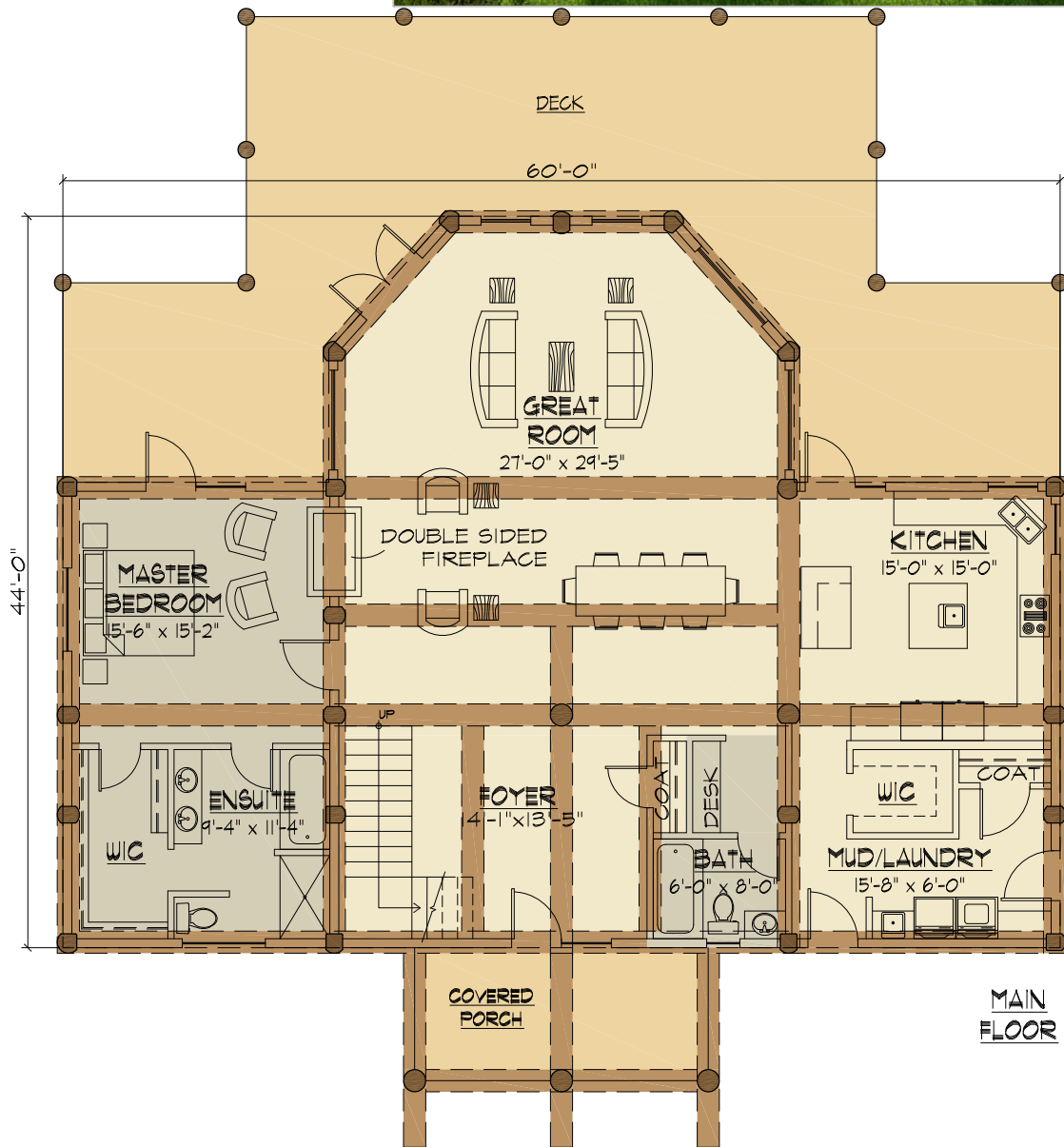


# THE BONNYVILLE



TYEE HOMES  
PO BOX 336  
KIMBERLEY BC, VIA 2Y9  
250-427-0510  
1-855-TYEELOG

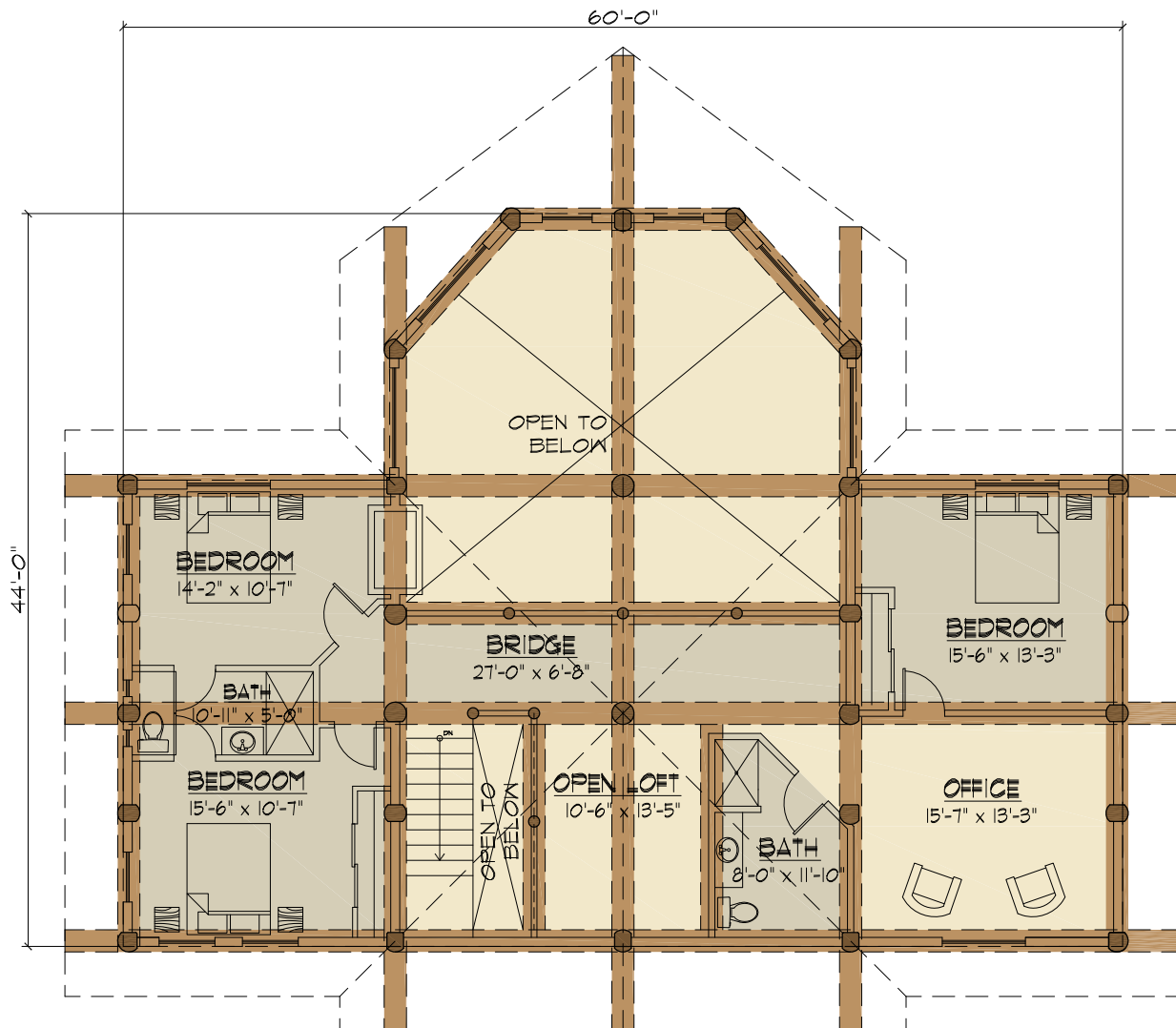
info@tyeeloghomes.com  
www.tyeehomes.com

## THE BONNYVILLE

4 BED, 4 BATH

MAIN FLOOR: 2070 SQ FT  
UPPER FLOOR: 1366 SQ FT

TOTAL: 3436 SQ FT



**UPPER  
FLOOR**



TYEE HOMES  
PO BOX 336  
KIMBERLEY BC, VIA 2Y9  
250-427-0510  
1-855-TYEELOG

info@tyeeloghomes.com  
www.tyeehomes.com

**THE BONNYVILLE**

4 BED, 4 BATH

MAIN FLOOR: 2070 SQ FT  
UPPER FLOOR: 1366 SQ FT

TOTAL: 3436 SQ FT