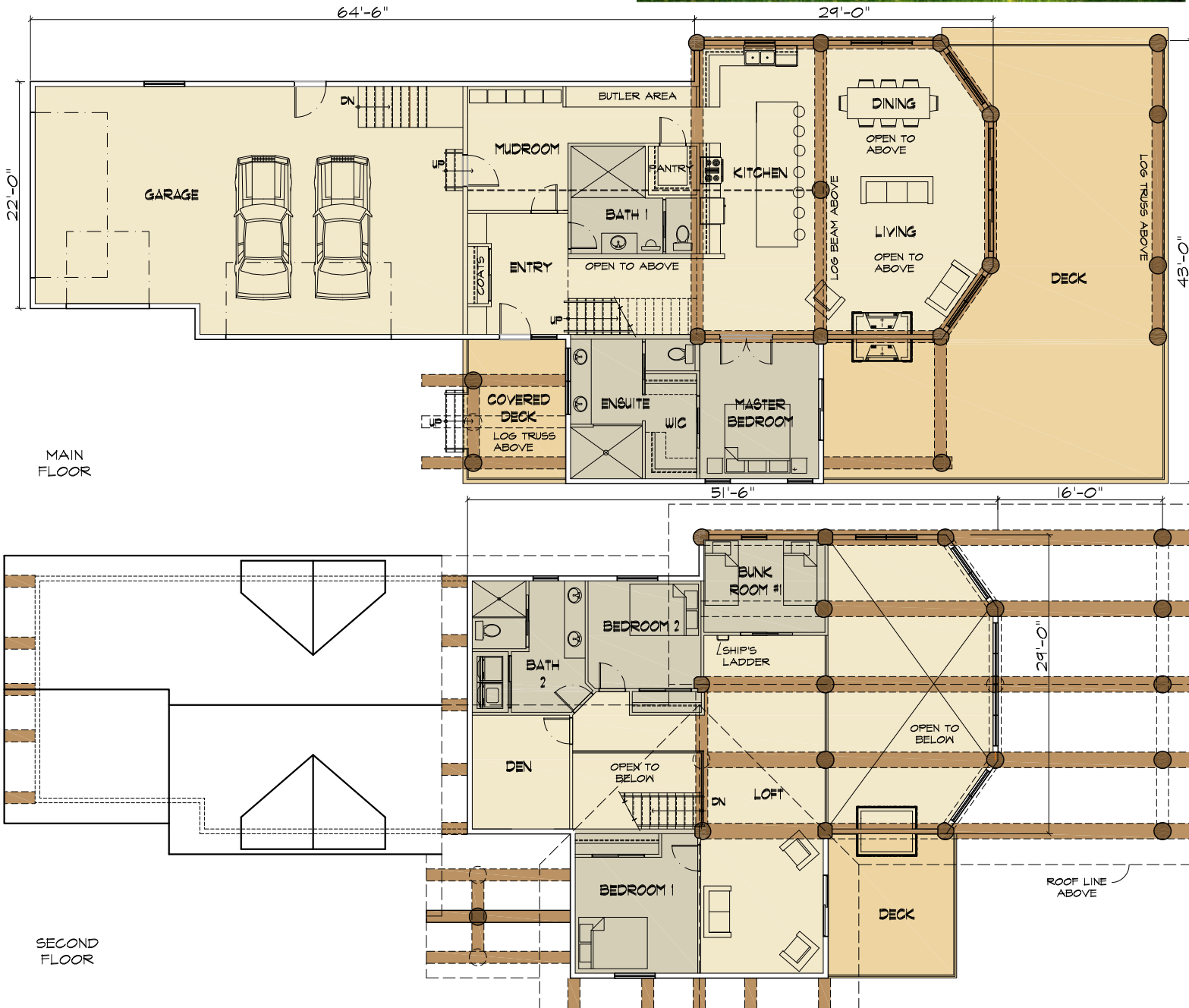


THE SANDPOINT



TYEE HOMES
 PO BOX 336
 KIMBERLEY BC, VIA 2Y9
 250-427-0510
 1-855-TYEELOG

info@tyeeloghomes.com
 www.tyeehomes.com

THE SANDPOINT

4 BED, 3 BATH

MAIN FLOOR: 1717 SQ FT
 SECOND FLOOR: 1183 SQ FT

TOTAL: 2900 SQ FT