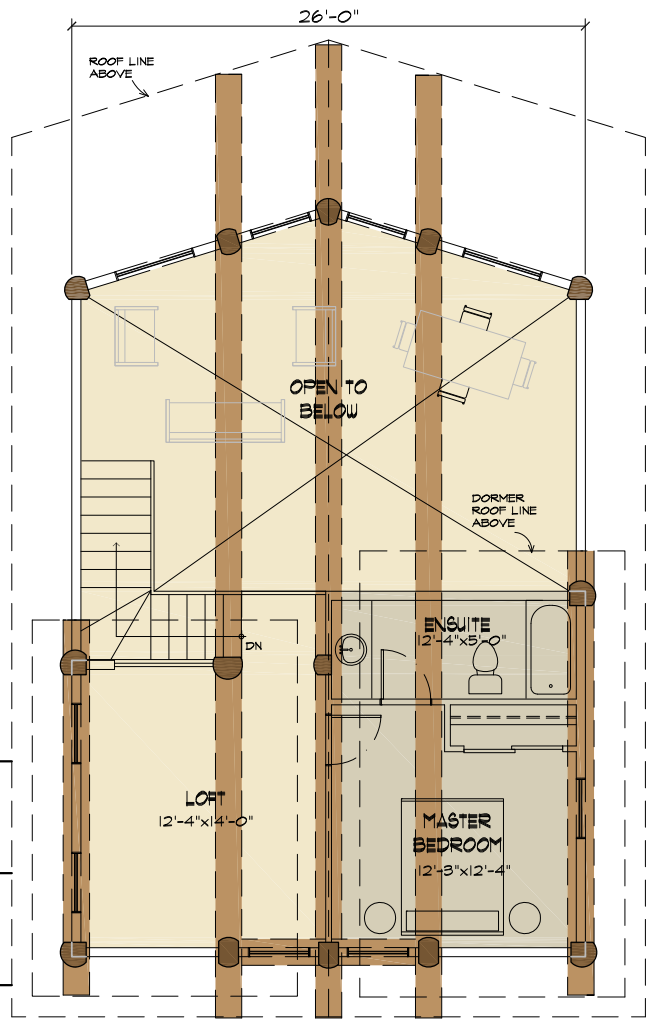
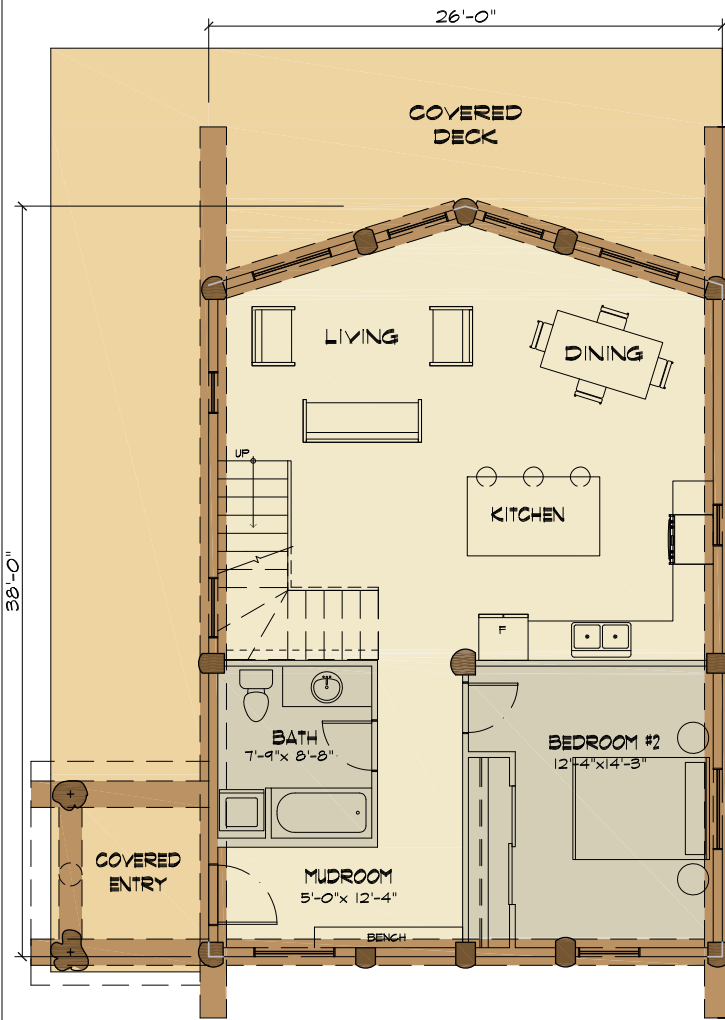


THE NORDEGG



TYEE HOMES
 PO BOX 336
 KIMBERLEY BC, VIA 2Y9
 250-427-0510
 1-855-TYEELOG

info@tyeeloghomes.com
 www.tyeehomes.com

THE NORDEGG

2 BED, 2 BATH

MAIN FLOOR: 936 SQ FT
 UPPER FLOOR: 450 SQ FT

TOTAL: 1386 SQ FT