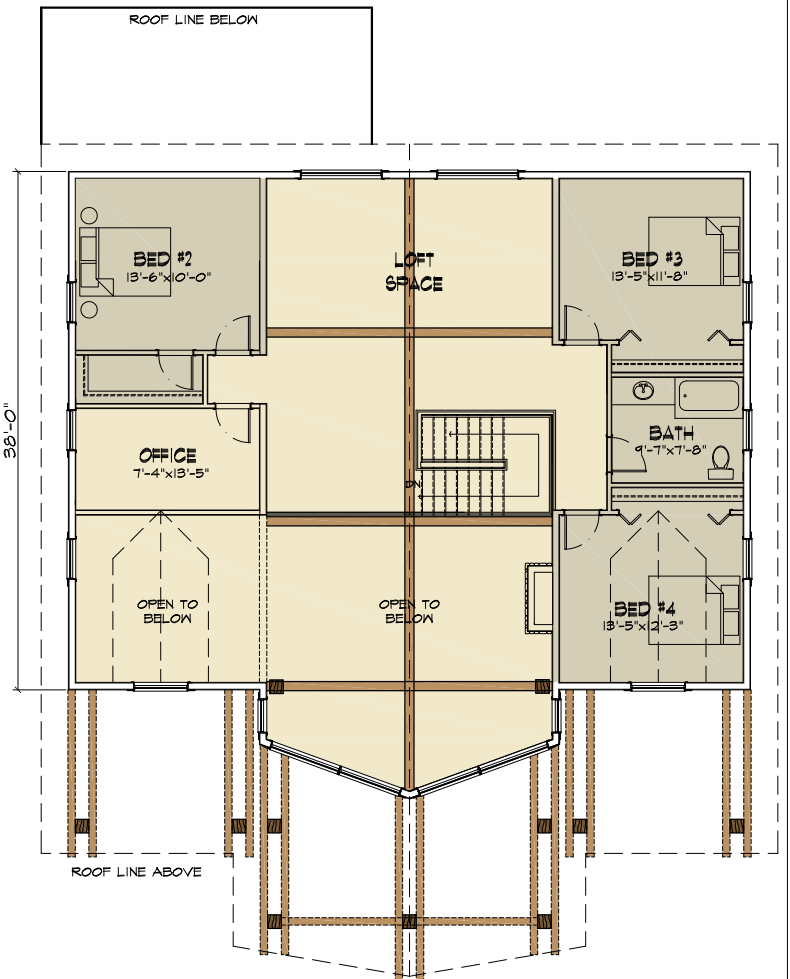
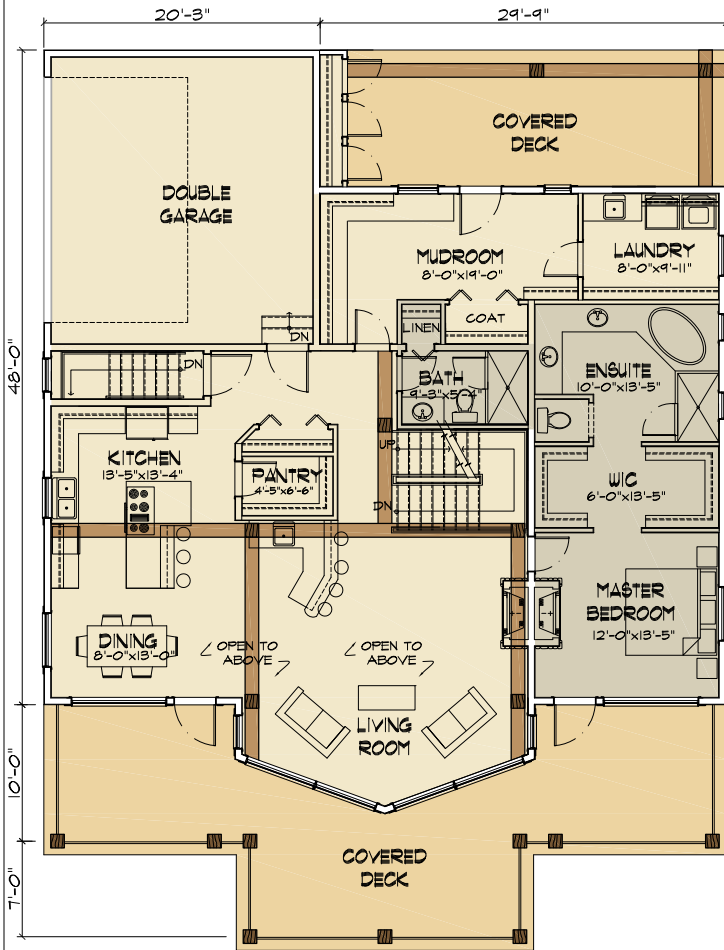


# THE BULL



TYEE HOMES  
 PO BOX 336  
 KIMBERLEY BC, VIA 2Y9  
 250-427-0510  
 1-855-TYEELOG

info@tyeeloghomes.com  
 www.tyeehomes.com

## THE BULL

4 BED, 3 BATH

MAIN FLOOR: 1796 SQ FT  
 UPPER FLOOR: 1439 SQ FT

TOTAL: 3235 SQ FT