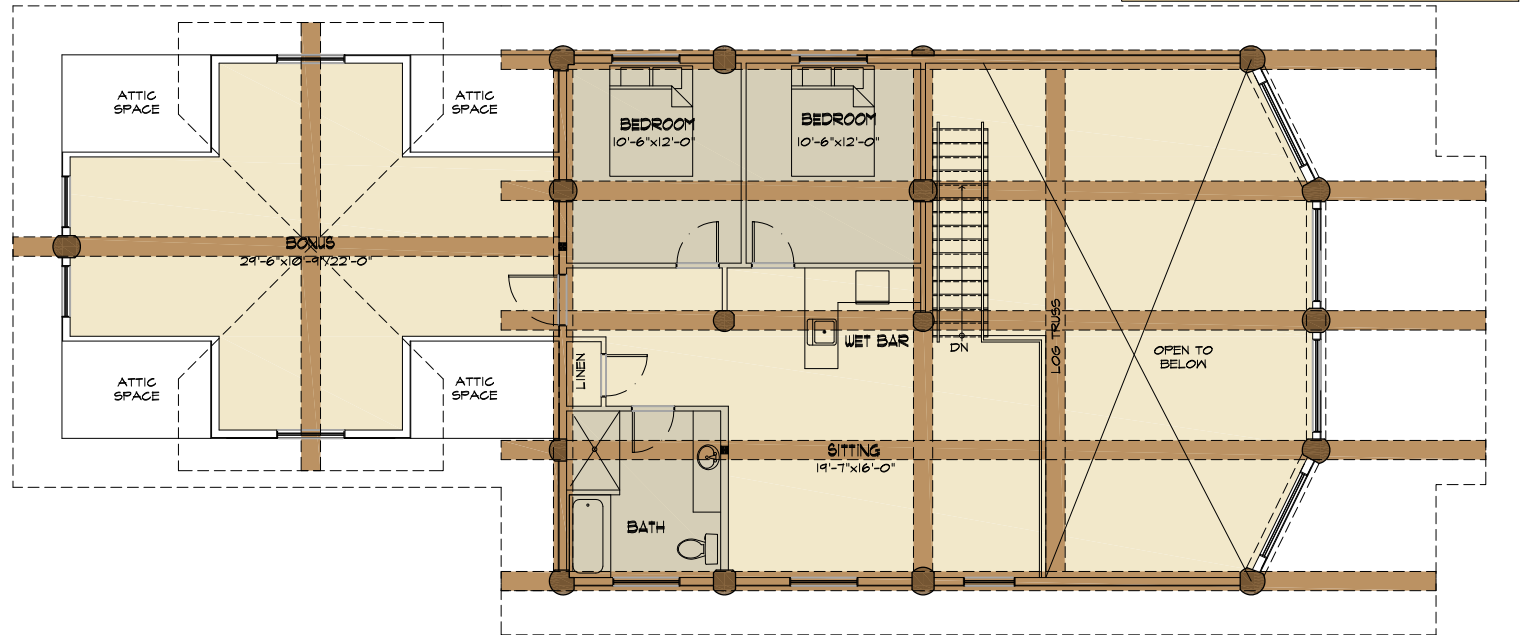


THE WIGWAM



TYEE HOMES
 PO BOX 336
 KIMBERLEY BC, VIA 2Y9
 250-427-0510
 1-855-TYEELOG

info@tyeeloghomes.com
 www.tyeehomes.com

THE WIGWAM

3 BED, 3 BATH
 MAIN FLOOR: 1439 SQ FT
 UPPER FLOOR: 1300 SQ FT
 TOTAL: 2739 SQ FT