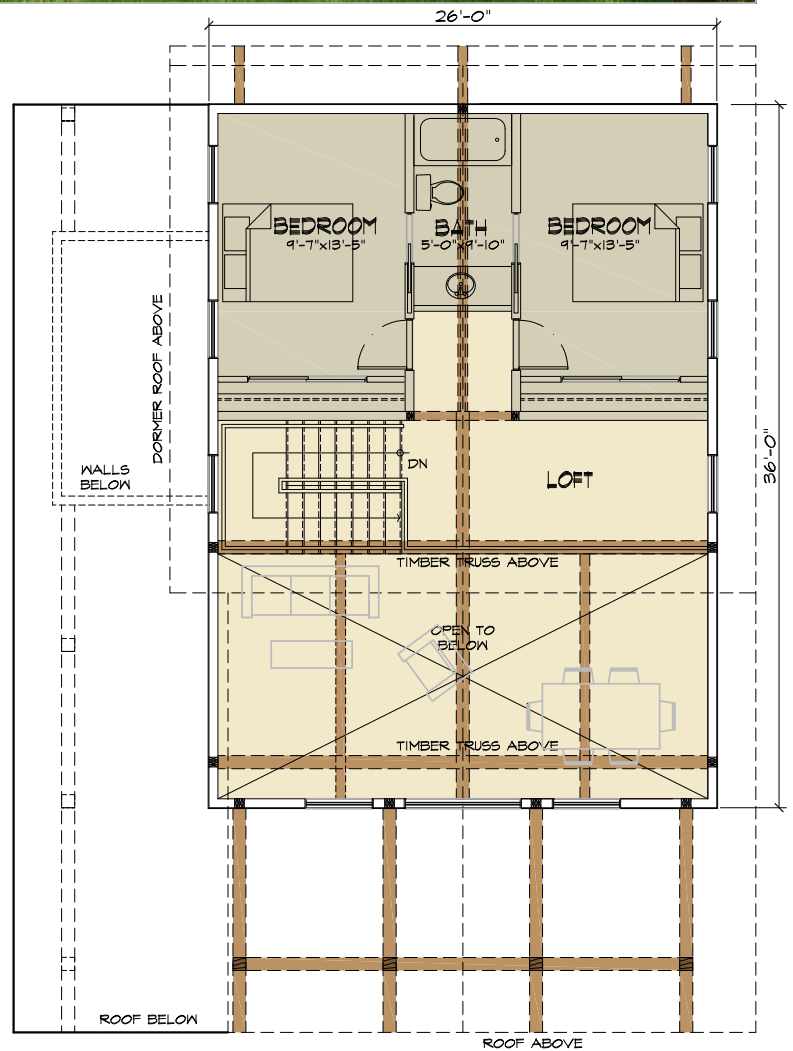
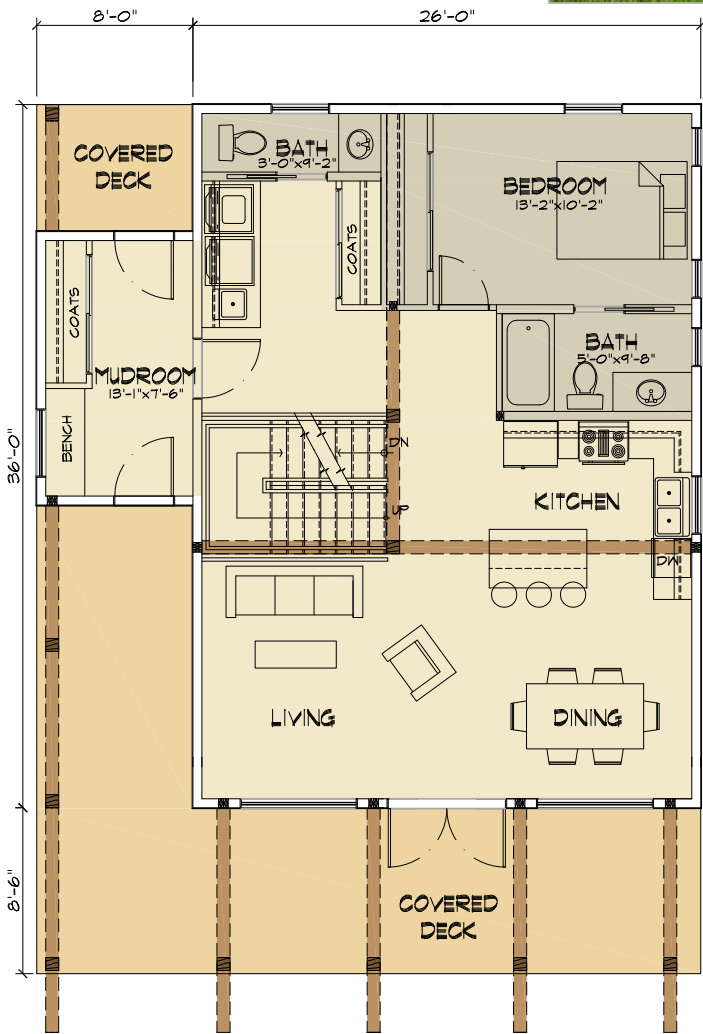


THE KIKOMUN



TYEE HOMES
PO BOX 336
KIMBERLEY BC, VIA 2Y9
250-427-0510
1-855-TYEELOG

info@tyeeloghomes.com
www.tyeehomes.com

THE KIKOMUN

3 BED, 3 BATH

MAIN FLOOR: 1048 SQ FT
LOFT FLOOR: 530 SQ FT

TOTAL: 1578 SQ FT