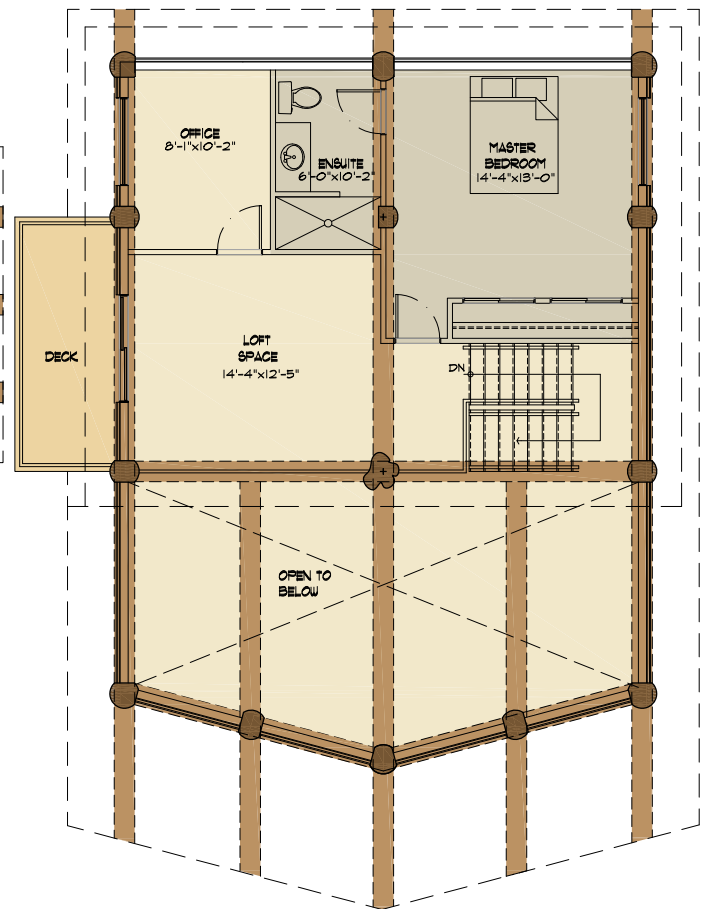
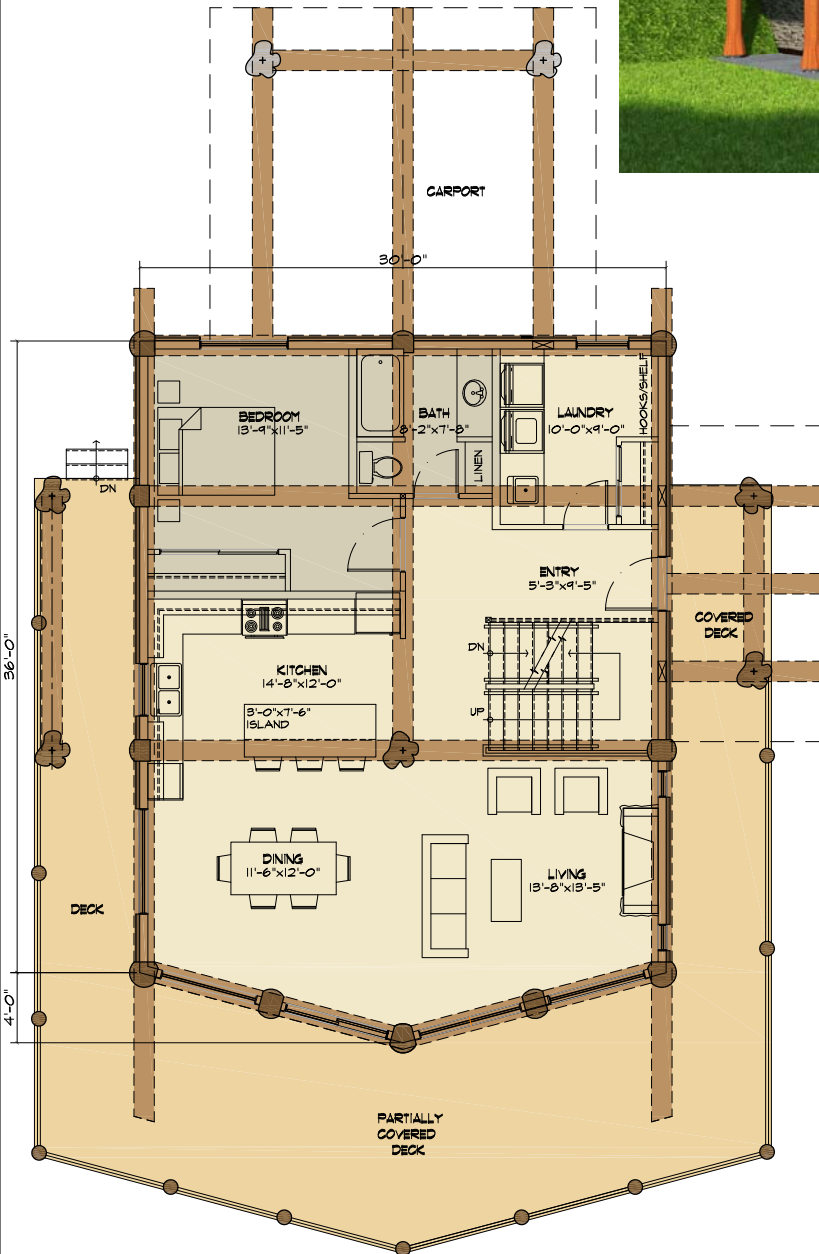


# THE WASA



TYEE HOMES  
 PO BOX 336  
 KIMBERLEY BC, VIA 2Y9  
 250-427-0510  
 1-855-TYEELOG

info@tyeeloghomes.com  
 www.tyeehomes.com

## THE WASA

2 BED, 2 BATH

MAIN FLOOR: 1140 SQ FT  
 LOFT FLOOR: 630 SQ FT

TOTAL: 1770 SQ FT