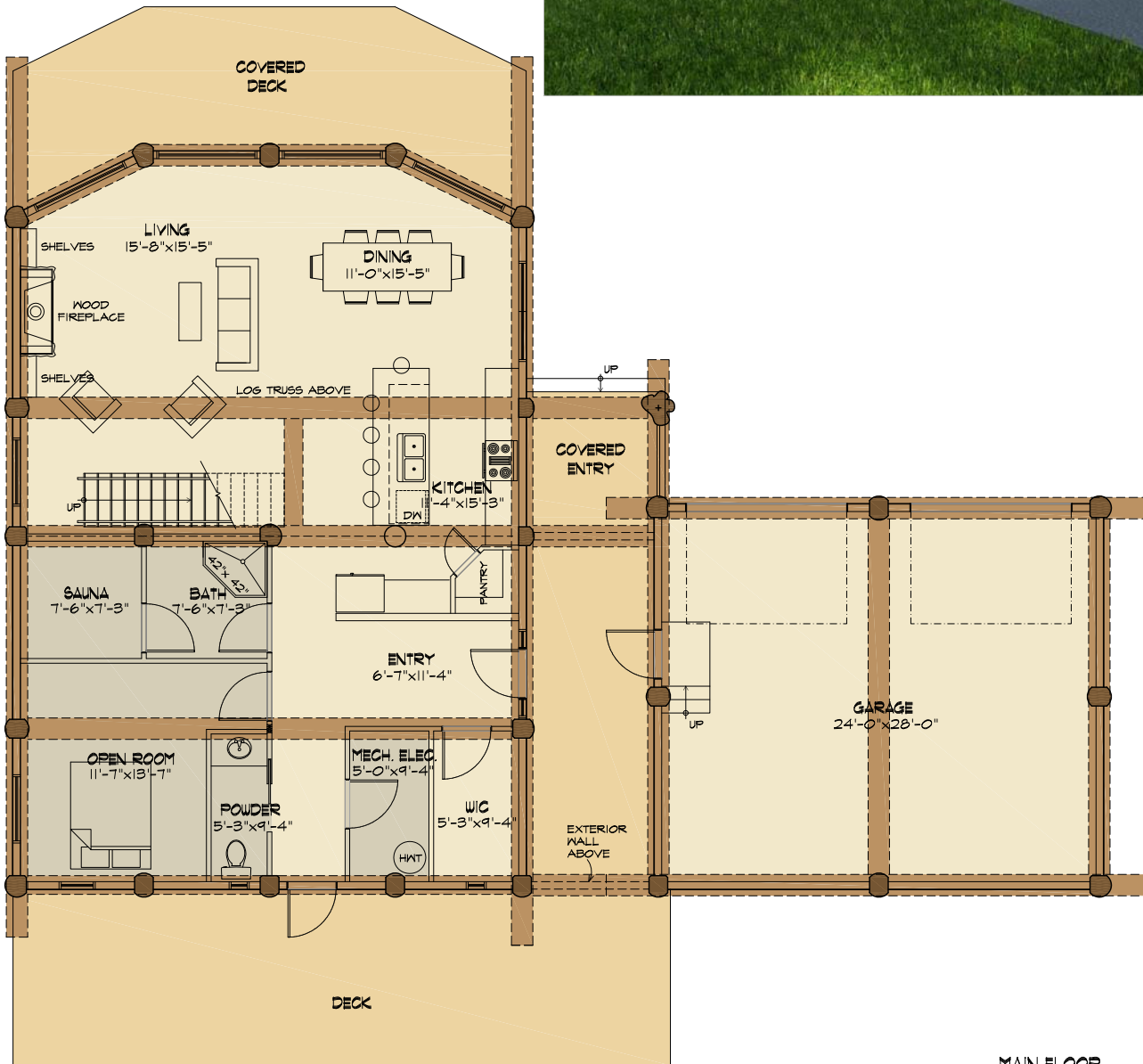


THE FAIRMONT



MAIN FLOOR



TYEE HOMES
 PO BOX 336
 KIMBERLEY BC, VIA 2Y9
 250-427-0510
 1-855-TYEELOG

info@tyeeloghomes.com
 www.tyeehomes.com

THE FAIRMONT

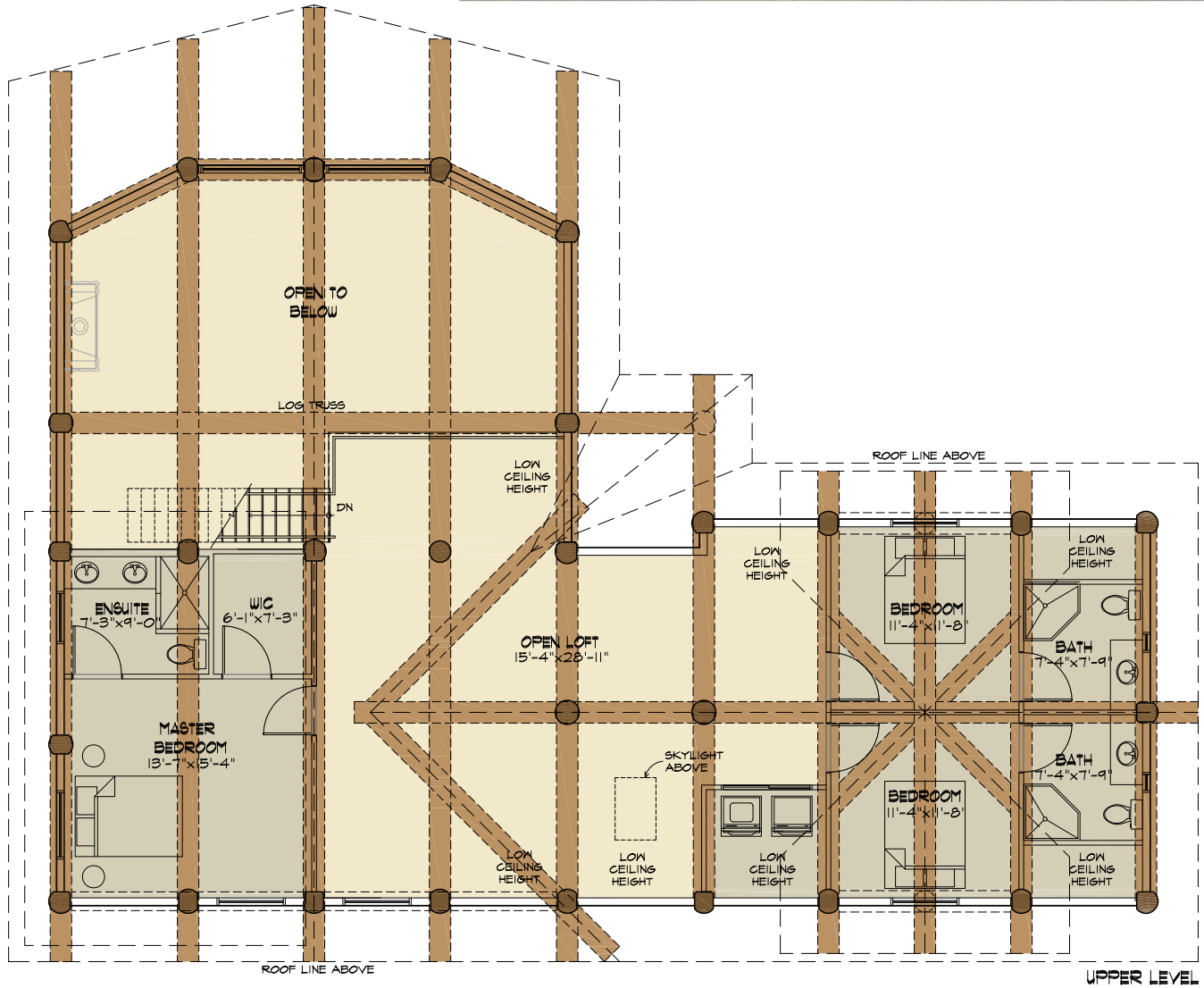
4 BED, 4 BATH

MAIN FLOOR: 1429 SQ FT

UPPER LEVEL
 (INCLUDES ABOVE GARAGE): 1470 SQ FT

TOTAL: 2899 SQ FT

THE FAIRMONT



TYEE HOMES
 PO BOX 336
 KIMBERLEY BC, VIA 2Y9
 250-427-0510
 1-855-TYEELOG

info@tyeeloghomes.com
 www.tyeehomes.com

THE FAIRMONT

4 BED, 4 BATH

MAIN FLOOR:	1429 SQ FT
UPPER LEVEL	
(INCLUDES ABOVE GARAGE):	1470 SQ FT
TOTAL:	2899 SQ FT